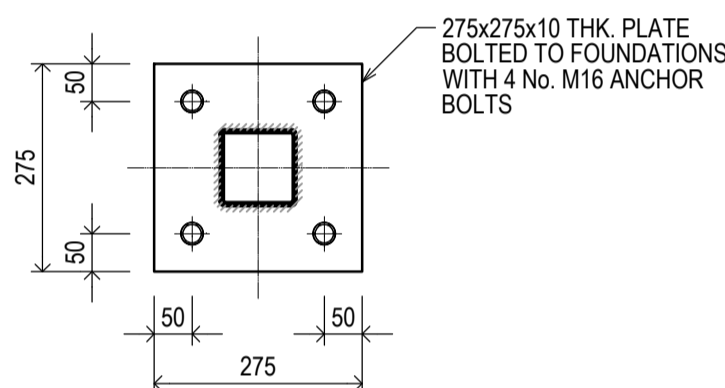
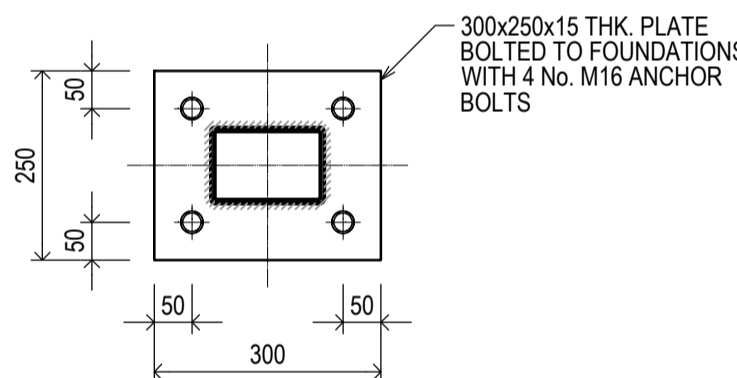


GROUND FLOOR PART PLAN 1
SHOWING NEW WALL REMOVAL WORKS
SCALE 1-20

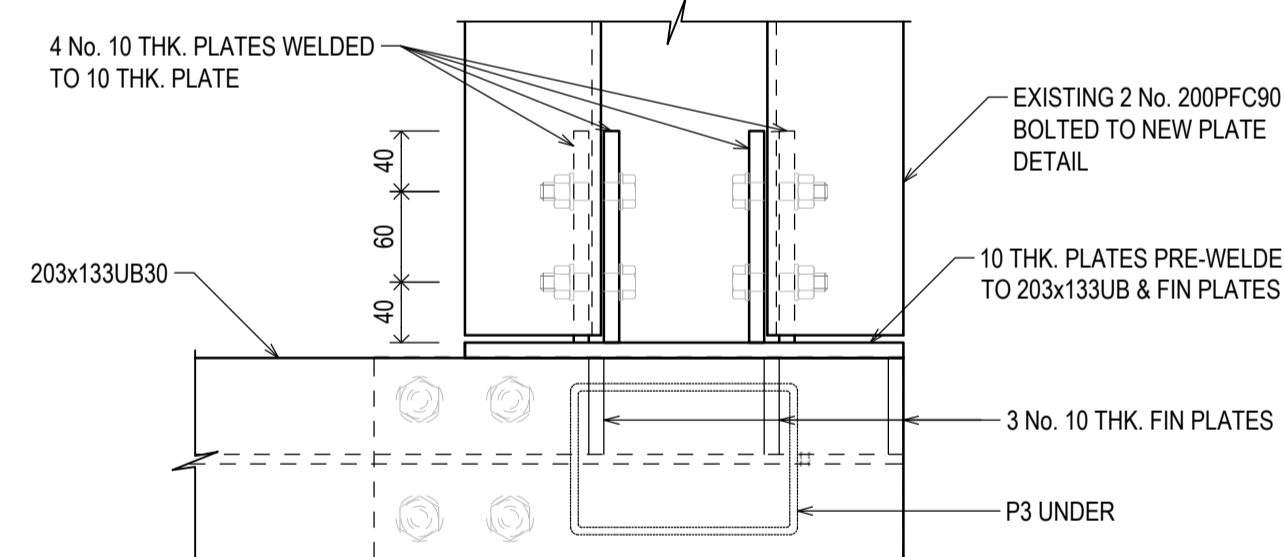
NOTE:
LENGTH OF B1 (EXISTING STEEL BEAM)
CONNECTING TO B3 TO BE CHECKED &
CONFIRMED PRIOR TO ORDERING ANY
STEEL.



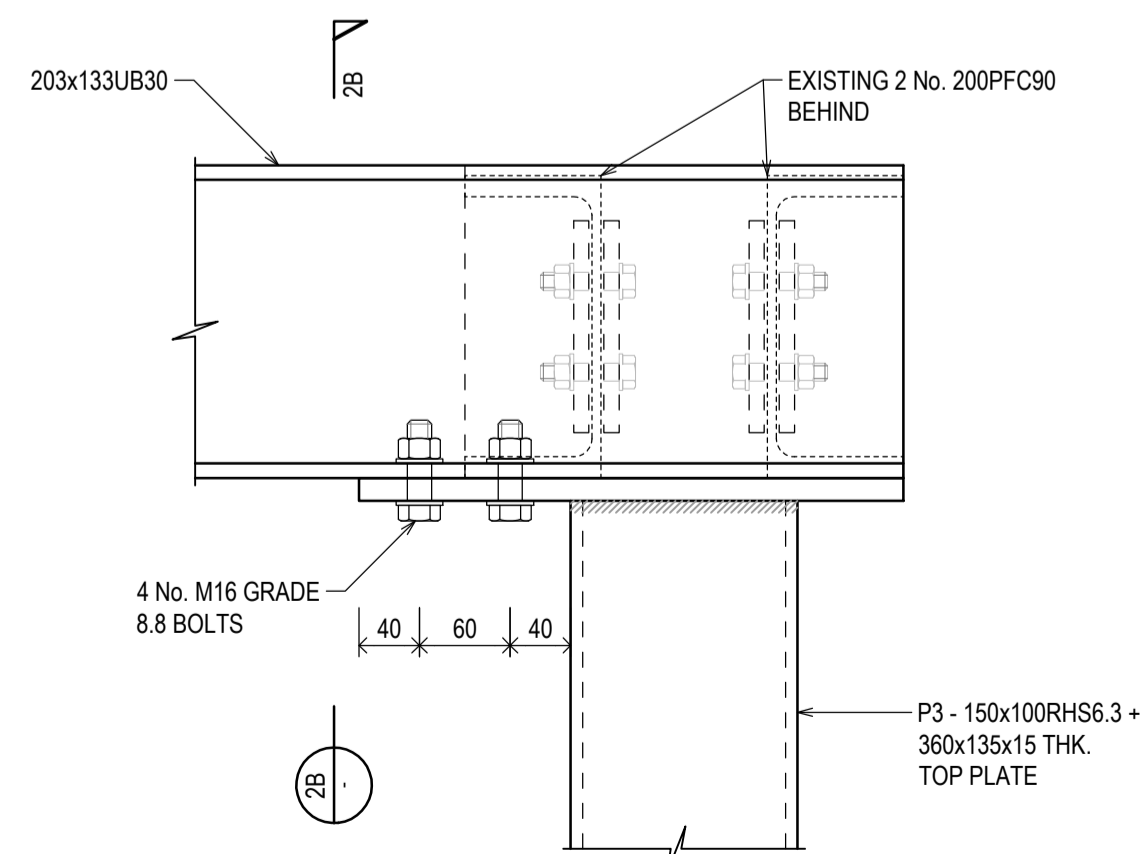
P2/P4 - SHS
BASEPLATE DETAIL
3 No. THUS
SCALE 1-10



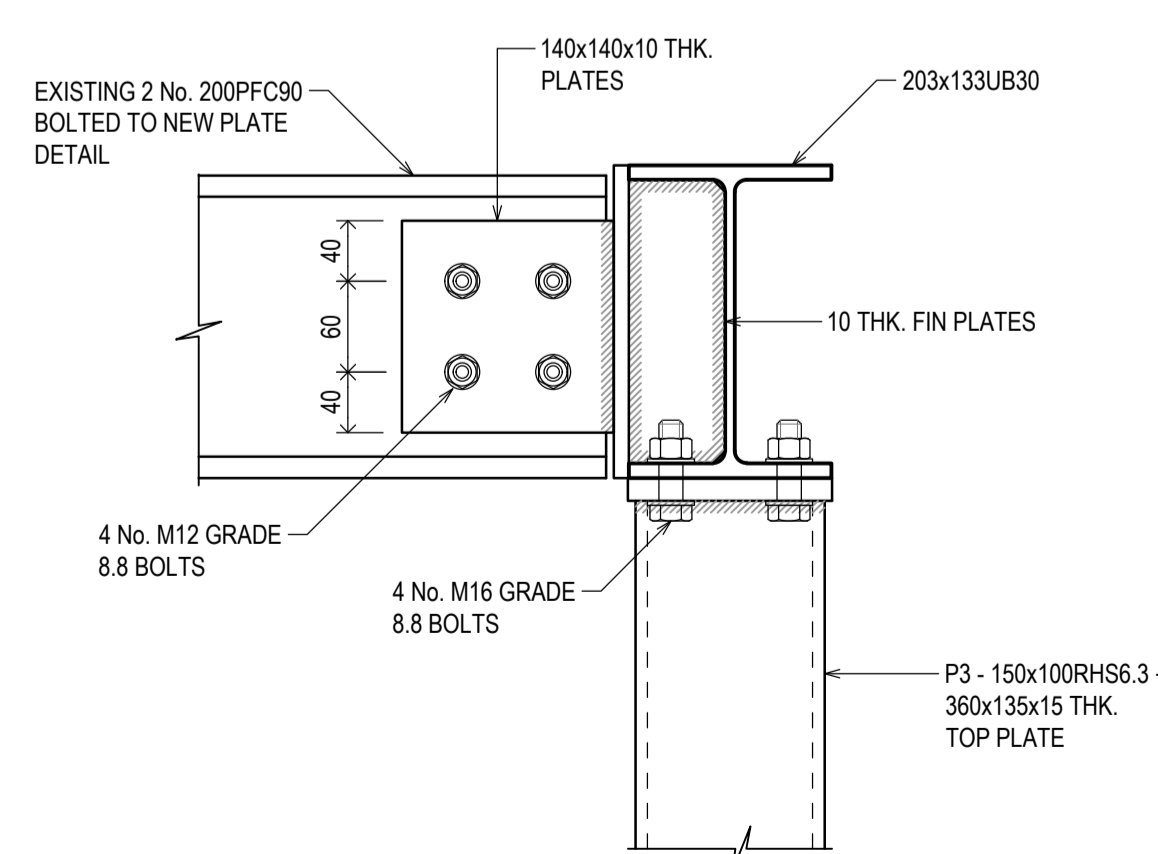
P3 - 150RHS
BASEPLATE DETAIL
1 No. THUS
SCALE 1-10



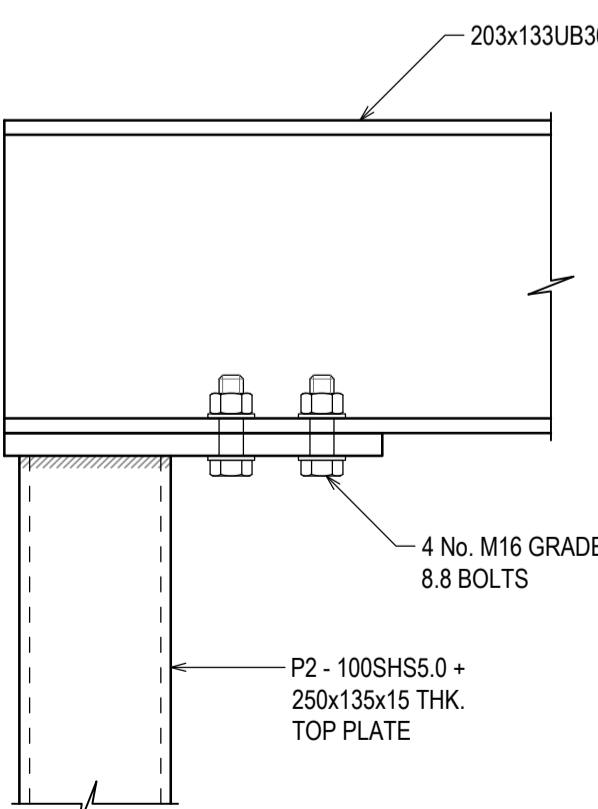
DETAIL 2 - PLAN
SCALE 1-5



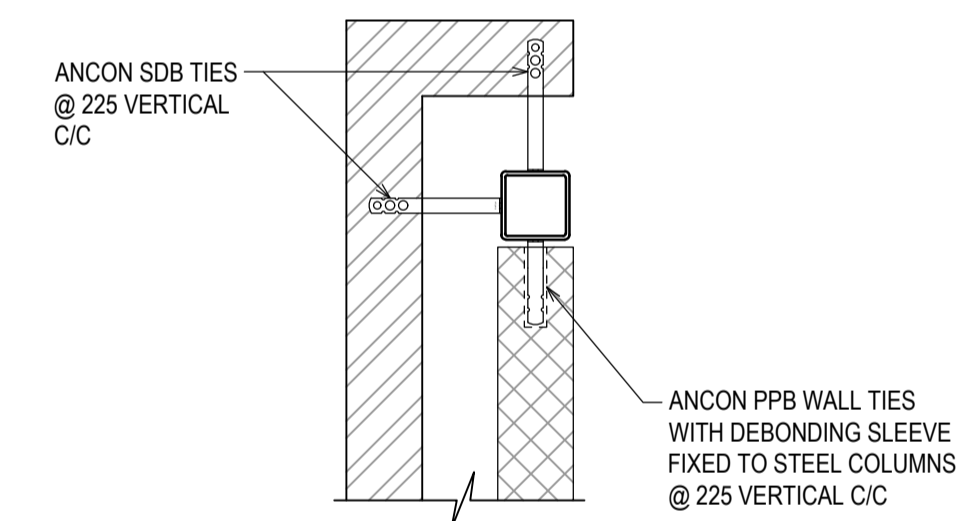
SECTION 2A-2A
SCALE 1-5



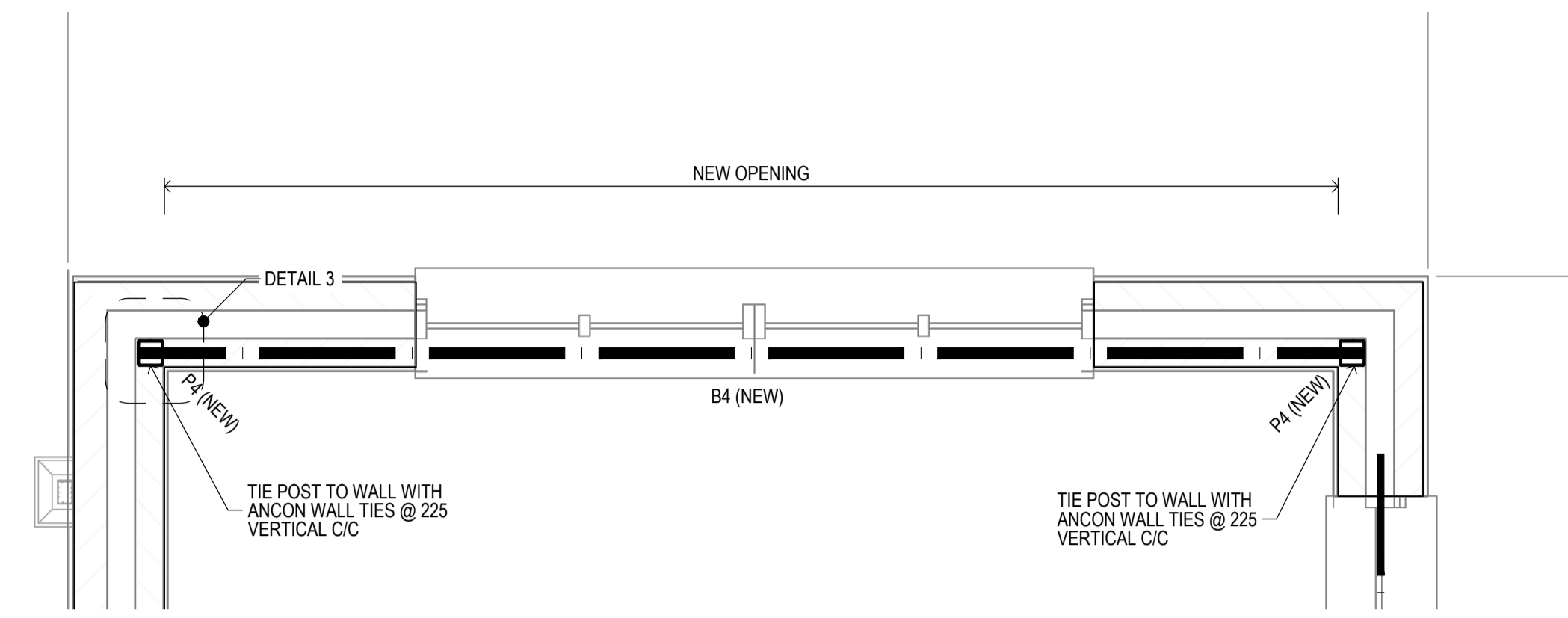
SECTION 2B-2B
SCALE 1-5



DETAIL 1
SCALE 1-5



MASONRY TIES TO STEEL POSTS
TYPICAL DETAIL
SCALE 1-20



GROUND FLOOR PART PLAN 2
SHOWING NEW OPENING
SCALE 1-20

REF	TYPE
B1* (EXISTING)	2 No. 200x90PFC30
P2 (NEW)	100SHS5.0
P3 (NEW)	150x100RHS6.3
P4 (NEW)	90SHS5.0
B3 (NEW)	203x133UB30
B4** (NEW)	180PFC90 + 10 THK. BOTTOM PLATE

NOTE: ALL STEEL TO BE GRADE S355
*BOLTED TOGETHER WITH M12 BOLTS @ 800 C/C
**INDICATES STEEL TO BE 'HOT-DIPPED' GALVANISED

CDM REGULATIONS 2015 - DESIGNER'S RESIDUAL RISKS

1. TEMPORARY PROPPING UNTIL ALL STEEL IS FULLY SECURED & BOLTED & DRY PACKED.

NOTE:
REFER TO ARCHITECT'S DRAWINGS FOR ALL BUILDING SETTING OUT INFORMATION.

NOTE:
ALL TEMPORARY PROPPING BY OTHERS.

- Notes:**
- IN ADDITION TO THESE NOTES REFERENCE SHALL BE MADE TO THE SPECIFICATION FOR THE WORKS AND ALL RELEVANT ARCHITECTS AND SPECIALISTS DRAWINGS.
 - THE CONTRACTOR IS RESPONSIBLE FOR VERIFYING ALL SITE SETTING OUT DIMENSIONS BEFORE COMMENCING WORK.
 - DIMENSIONS SHOWN ON THIS DRAWING SHALL NOT BE SCALED ONLY WRITTEN OR CALCULATED DIMENSIONS SHALL BE USED.
 - STRUCTURAL STEELWORK**
 - ALL STEELWORK SHALL BE DESIGNED, FABRICATED AND ERECTED IN ACCORDANCE WITH EUROCODE 3 AND THE NATIONAL STRUCTURAL STEELWORK SPECIFICATION FOR BUILDING CONSTRUCTION, 5th EDITION. CE MARKING AND MANUFACTURED TO BS EN 1090-2 EXECUTION CLASS EXC2
 - STEELWORK GRADES WILL BE AS BELOW, UNLESS NOTED OTHERWISE:
 - ROLLED STRUCTURAL SECTIONS = S355JR
 - ROLLED HOLLOW SECTIONS = S355LH
 - PLATES, RE-ROLLED RSAs & RE-ROLLED PFCs = S275JR
 - THE FABRICATOR IS RESPONSIBLE FOR THE DESIGN OF ALL CONNECTIONS IN ACCORDANCE WITH BS 5950 AND TO THE LOADS GIVEN ON THE DRAWINGS. ALL LOADS STATED ARE UNFACTORED CHARACTERISTIC LOADS.
 - THE FABRICATOR SHALL PROVIDE A METHOD STATEMENT DETAILING THE ERECTION SEQUENCE AND THE MEANS OF ENSURING TEMPORARY STABILITY OF THE FRAME.
 - ALL BOLTED CONNECTIONS TO HAVE A MINIMUM 4M16(8.8) BOLTS UNLESS NOTED OTHERWISE.
 - ALL WELDED COMPONENT TO HAVE A MINIMUM 6mm FILLET WELDS UNLESS NOTED OTHERWISE.
 - THE STRUCTURE IS CONSIDERED TO FALL WITHIN THE FOLLOWING CATEGORIES:
 - CONSEQUENCE CLASS C2
 - SERVICE CLASS S1
 - PRODUCTION CATEGORY PC1 (Unless agreed otherwise)
 - EXECUTION CLASS EXC2 - ADOPT EXECUTION CLASS EXC2, BUT WITH THE FABRICATOR ENSURING THAT ALL STEELWORK INCLUDING BOLT / WELD CONSUMABLES ARE FROM REPUTABLE SOURCES WITH FULL WRITTEN TRACEABILITY
 - STEELWORK PROTECTIVE TREATMENT**
 - THE STEELWORK SHALL BE TREATED IN ACCORDANCE WITH THE FOLLOWING SPECIFICATION:
 - CONCRETE CASED MEMBERS - STEELWORK SHALL BE FREE FROM OIL, GREASE, DIRT OR LOOSE RUST AND MILLSCALE
 - PERIMETER STEELWORK & EXTERNALLY CONCEALED STEELWORK IN CLEAR SEPARATION FROM OUTER LEAF - SHOT BLAST AND APPLY PROTECTIVE COATING TO GIVE LIFE TO FIRST MAINTENANCE OF MORE THAN 20 YEARS IN ACCORDANCE WITH BS EN ISO 12944-1.3, WHERE SHOWN ON THE ARCHITECT'S DETAILS UNDERCOAT (2 COATS) FOLLOWED BY A GLOSS FINISH OF PAINT COMPATIBLE WITH PROTECTIVE COATING AND OF THE COLOUR SPECIFIED BY THE ARCHITECT.
 - INTERNAL CONCEALED STEELWORK - NO TREATMENT. STEELWORK TO BE FREE FROM LOOSE RUST AND MILLSCALE.
 - EXTERNAL EXPOSED STEELWORK TO BE GALVANISED TO GIVE LIFE TO FIRST MAINTENANCE OF MORE THAN 20 YEARS IN ACCORDANCE WITH BS EN ISO 12944-1:3 & 1998.
 - STEELWORK IN CAVITIES OF EXTERNAL WALLS SHALL BE FURTHER SITE PAINTED WITH 2 COATS BITUMINOUS PAINT.
 - WALLS**
 - UNLESS NOTED OTHERWISE ON THE DRAWING, BLOCKWORK STRENGTHS WILL BE 7.0N/mm² UNDERSIDE OF DPC, IN 1:1.6 MORTAR
 - BRICKS/BLOCKS ARE TO COMPLY WITH THE 'SPECIAL CATEGORY' OF MANUFACTURING CONTROL TO BS5628 PT.1, CLAUSE 27.2.12
 - MORTAR WILL BE PROPERLY GAUGED TO GIVE A 1:1.5 MIX OR EQUIVALENT UNLESS NOTED OTHERWISE USING SAND COMPLYING WITH BS1198-1200 AND ORDINARY PORTLAND CEMENT TO BS12.
 - WORKMANSHIP WILL BE IN STRICT ACCORDANCE WITH THE RECOMMENDATIONS OF BS5628 PT.1. BRICKS WILL BE LAID FROG UP. THE VERTICAL AND BED JOINTS FILLED SOLID WITH MORTAR
 - BOTH LEAVES OF CAVITY WALLS ARE TO BE TIED TOGETHER USING STAINLESS STEEL 'DOUBLE TRIANGLE' TYPE WALL TIES OR EQUIVALENT. WALL TIES SPACED AT 450mm VERTICAL AND 750mm HORIZONTAL CENTRES AND STAGGERED
 - MOVEMENT JOINTS:**
 - THE OUTER LEAF OF EXTERNAL WALLS IS TO BE PROVIDED WITH 15mm WIDE MOVEMENT JOINTS AT LOCATIONS SHOWN ON PLAN. THE JOINT IS TO BE FILLED WITH A SUITABLE COMPRESSIBLE / EXPANDABLE MATERIAL AND SEALED WITH MASTIC. THE OUTER LEAF IS TIED TO THE INNER LEAF EACH SIDE OF JOINT AT 225mm VERTICAL CENTRES.
 - MOVEMENT JOINTS IN INTERNAL BLOCKWORK PROVIDED AT APPROXIMATELY 6.0m CENTRES TO MANUFACTURERS RECOMMENDATIONS.
 - STAINLESS STEEL BRICKTORTOR TO BE USED ABOVE AND BELOW THE WINDOW OPENINGS. (2nd COURSES 600mm BEYOND THE REVEAL, ALSO ABOVE DOOR OPENINGS)
 - FLOORS DESIGNED FOR - (EXCL SWT)
 - FINISHES - 2.0kN/m²
 - SERVICES - 0.1kN/m²
 - IMPOSED - 1.5kN/m²
 - STUD PARTITIONS - 0.5kN/m²

Rev	Description	CJP	SB	28.01.19
A	FIRST ISSUE	CJP	SB	28.01.19

BdR
Incorporating:
K L Harrison & Associates Ltd
Civil & Structural Engineering Consultants
The Old Engine House, Gobdlands Farm Business Park
Court Lane, Haslow, Kent, TN11 0DP
Tel 01732 851416
email: engineering@bdr.uk.com

Client
MR DOWLE & MS SMITH

Project
LONG HOLT, SOUTHBOROUGH

Drawing
PROPOSED ALTERATIONS PLANS & DETAILS

PRELIMINARY

Scale @	Date	Drawn by	Checked
A1	JAN 18	CJP	AML
AS SHOWN			

Job No.	Org. No.	Rev
17-0743	S002	A

